

♩ = c.80

Gloria

Music by
Paul Cook

Treble 1
f Glo-ri- a!Glo-ri- a!Glo-ri- a!Glo-ri- a! Glo-ri-a in ex-cel-sis De - o

Treble 2
f Glo-ri- a!Glo-ri- a!Glo-ri- a!Glo-ri- a! Glo-ri-a in ex-cel-sis De - o

Alto 1
f Glo-ri- a!Glo-ri- a!Glo-ri- a!Glo-ri- a! Glo-ri-a in ex-cel-sis De - o

Alto 2
f Glo-ri- a!Glo-ri- a!Glo-ri- a!Glo-ri- a! Glo-ri-a in ex-cel-sis De - o

Tenor 1
f Glo-ri- a!Glo-ri- a!Glo-ri- a!Glo-ri- a! Glo-ri-a in ex-cel-sis De - o

Tenor 2
f Glo-ri- a!Glo-ri- a!Glo-ri- a!Glo-ri- a! Glo-ri-a in ex-cel-sis De - o

Bass 1
f Glo-ri- a!Glo-ri- a!Glo-ri- a!Glo-ri- a! Glo-ri-a in ex-cel-sis De - o

Bass 2
f Glo-ri- a!Glo-ri- a!Glo-ri- a!Glo-ri- a! Glo-ri-a in ex-cel-sis De - o

4

Tr. 1

p et in te - rra pax hom-mi-ni-bus

Tr. 2

mf et in

A. 1

p et in te - rra pax hom-mi-ni-bus

A. 2

mf et in

T. 1

p et in te - rra pax hom-mi-ni-bus et in te - rra pax hom-mi-ni-bus

T. 2

mf et in

B. 1

p et in te - rra pax hom-mi-ni-bus et in te - rra pax hom-mi-ni-bus

B. 2

mf et in

6

Tr. 1
 et in te - rra pax hom-mi-ni-bus et in te - rra pax hom-mi-ni-bus

Tr. 2
 te - rra pax — ho - mi - ni - bus

A. 1
 et in te - rra pax hom-mi-ni-bus et in te - rra pax hom-mi-ni-bus

A. 2
 te - rra pax — ho - mi - ni - bus

T. 1
 et in te - rra pax hom-mi-ni-bus et in te - rra pax hom-mi-ni-bus

T. 2
 te - rra pax — ho - mi - ni - bus

B. 1
 et in te - rra pax hom-mi-ni-bus et in te - rra pax hom-mi-ni-bus

B. 2
 te - rra pax — ho - mi - ni - bus

8

Tr. 1

 et in te - rra pax hom-mi - ni - bus bo - nae vo - lun - ta - tis.

Tr. 2

 bo - nae vo - lun ta - tis.

A. 1

 et in te - rra pax hom-mi - ni - bus bo - nae vo - lun - ta - tis.

A. 2

 bo - nae vo - lun ta - tis.

T. 1

 et in te - rra pax hom-mi - ni - bus bo - nae vo - lun - ta - tis.

T. 2

 bo - nae vo - lun ta - tis.

B. 1

 et in te - rra pax hom-mi - ni - bus bo - nae vo - lun - ta - tis.

B. 2

 bo - nae vo - lun ta - tis.

A

10

Tr. 1
Lau - da - mus te. A - do - ra - mus
f

Tr. 2
Lau - da - mus te. A - do - ra - mus
f

A. 1
Lau - da - mus te. A - do - ra - mus
f

A. 2
Lau - da - mus te. A - do - ra - mus
f

T. 1
Lau - da - mus te. A - do - ra - mus te.
f

T. 2
Lau - da - mus te. A - do - ra - mus te.
f

B. 1
Lau - da - mus te. A - do - ra - mus te.
f

B. 2
Lau - da - mus te. A - do - ra - mus te.
f

Tr. 1
 3/4 3 4/4 3 3
 Glo-ri - fi - ca mus te. Gra - ti - as a - gi-mus ti - bi prop-ter

Tr. 2
 3/4 3 3/4 3 4/4 3 3
 Glo-ri - fi - ca mus te. Gra - ti - as a - gi-mus ti - bi prop-ter

A. 1
 3/4 3 4/4 3 3
 Glo-ri - fi - ca mus te. Gra - ti - as a - gi-mus ti - bi prop-ter

A. 2
 3/4 3 3/4 3 4/4 3 3
 Glo-ri - fi - ca mus te. Gra - ti - as a - gi-mus ti - bi prop-ter

T. 1
 8 3/4 3 4/4 3 3
 Glo-ri - fi - ca mus te. Gra - ti - as a - gi-mus ti - bi prop-ter

T. 2
 8 3/4 3 3/4 3 4/4 3 3
 Glo-ri - fi - ca mus te. Gra - ti - as a - gi-mus ti - bi prop-ter

B. 1
 3/4 3 4/4 3 3
 Glo-ri - fi - ca - mus te. Gra-ti - as a - gi-mus ti - bi prop-ter

B. 2
 3/4 3 4/4 3 3
 Glo-ri - fi - ca mus te. Gra - ti - as a - gi-mus ti - bi prop-ter

14

Tr. 1
 ma-gnam glo-ri-am tu - am. (humming) *pp*

Tr. 2
 ma- gnam glo-ri-am tu - am. Do - mi - ne De - us, *mf*

A. 1
 ma-gnam glo-ri-am tu - am. (humming) *pp*

A. 2
 ma- gnam glo-ri-am tu - am. Do - mi - ne De - us, *mf*

T. 1
 ma-gnam glo-ri-am tu - am. (humming) *pp*

T. 2
 ma- gnam glo-ri-am tu - am. Do - mi - ne De - us, *mf*

B. 1
 ma-gnam glo-ri-am tu - am. (humming) *pp*

B. 2
 ma- gnam glo-ri-am tu - am. Do - mi - ne De - us, *mf*

Tr. 1

Do-mi-ne Fi - li__

mf

Detailed description: This staff is for the first Trumpet (Tr. 1). It features a treble clef and a 4/4 time signature. The first two measures contain a whole note chord, which is then held over with a slur. The third measure begins with a triplet of eighth notes: D4, E4, and F#4. The lyrics 'Do-mi-ne Fi - li__' are written below the staff, with the 'mf' dynamic marking below the triplet.

Tr. 2

Rex cae-les - tis. De - us Pa-ter om - ni - po - tens. (humming)

pp

Detailed description: This staff is for the second Trumpet (Tr. 2). It features a treble clef and a 4/4 time signature. The melody consists of eighth notes: D4, E4, F#4, G4, A4, B4, C5, B4, A4, G4, F#4, E4, D4. The lyrics 'Rex cae-les - tis. De - us Pa-ter om - ni - po - tens. (humming)' are written below the staff, with the 'pp' dynamic marking below the final measure.

A. 1

Do-mi-ne Fi - li__

mf

Detailed description: This staff is for the first Alto (A. 1). It features a treble clef and a 4/4 time signature. The first two measures contain a whole note chord, which is then held over with a slur. The third measure begins with a triplet of eighth notes: D4, E4, and F#4. The lyrics 'Do-mi-ne Fi - li__' are written below the staff, with the 'mf' dynamic marking below the triplet.

A. 2

Rex cae-les - tis. De - us Pa-ter om - ni - po - tens. (humming)

pp

Detailed description: This staff is for the second Alto (A. 2). It features a treble clef and a 4/4 time signature. The melody consists of eighth notes: D4, E4, F#4, G4, A4, B4, C5, B4, A4, G4, F#4, E4, D4. The lyrics 'Rex cae-les - tis. De - us Pa-ter om - ni - po - tens. (humming)' are written below the staff, with the 'pp' dynamic marking below the final measure.

T. 1

Do-mi-ne Fi - li__

mf

Detailed description: This staff is for the first Trombone (T. 1). It features a treble clef and a 4/4 time signature. The first two measures contain a whole note chord, which is then held over with a slur. The third measure begins with a triplet of eighth notes: D4, E4, and F#4. The lyrics 'Do-mi-ne Fi - li__' are written below the staff, with the 'mf' dynamic marking below the triplet.

T. 2

Rex cae-les - tis. De - us Pa-ter om - ni - po - tens. (humming)

pp

Detailed description: This staff is for the second Trombone (T. 2). It features a treble clef and a 4/4 time signature. The melody consists of eighth notes: D4, E4, F#4, G4, A4, B4, C5, B4, A4, G4, F#4, E4, D4. The lyrics 'Rex cae-les - tis. De - us Pa-ter om - ni - po - tens. (humming)' are written below the staff, with the 'pp' dynamic marking below the final measure.

B. 1

Do-mi-ne Fi - li__

mf

Detailed description: This staff is for the first Bassoon (B. 1). It features a bass clef and a 4/4 time signature. The first two measures contain a whole note chord, which is then held over with a slur. The third measure begins with a triplet of eighth notes: D4, E4, and F#4. The lyrics 'Do-mi-ne Fi - li__' are written below the staff, with the 'mf' dynamic marking below the triplet.

B. 2

Rex cae-les - tis. De - us Pa-ter om - ni - po - tens. (humming)

pp

Detailed description: This staff is for the second Bassoon (B. 2). It features a bass clef and a 4/4 time signature. The melody consists of eighth notes: D4, E4, F#4, G4, A4, B4, C5, B4, A4, G4, F#4, E4, D4. The lyrics 'Rex cae-les - tis. De - us Pa-ter om - ni - po - tens. (humming)' are written below the staff, with the 'pp' dynamic marking below the final measure.

21

Tr. 1
u - ni - ge - ni - te, Ie - su Chri - ste. Do -
f

Tr. 2
Ie - su Chri - ste. Do -
f

A. 1
u - ni - ge - ni - te, Ie - su Chri - ste. Do - mi -
f

A. 2
Ie - su Chri - ste. Do - mi -
f

T. 1
u - ni - ge - ni - te, Ie - su Chri - ste. Do - mi - ne De -
f

T. 2
Ie - su Chri - ste. Do - mi - ne De -
f

B. 1
u - ni - ge - ni - te, Ie - su Chri - ste. Do - mi - ne De -
f

B. 2
Ie - su Chri - ste. Do - mi - ne De -
f

Detailed description of the musical score: The score is for eight voices, arranged in two groups of four. The top four parts (Tr. 1, Tr. 2, A. 1, A. 2) are in soprano and alto clefs, while the bottom four parts (T. 1, T. 2, B. 1, B. 2) are in tenor and bass clefs. The key signature has one sharp (F#). The time signature is 4/4. The lyrics are: 'u - ni - ge - ni - te, Ie - su Chri - ste. Do - mi - ne De -'. Dynamics include a forte (*f*) marking at the end of each line. There are triplet markings over the first three notes of the first line in Tr. 1, A. 1, T. 1, and B. 1. The score is numbered 21 at the top left and 9 at the top right.

Tr. 1

-mi - ne De - us, Ag - nus De -

Tr. 2

-mi - ne De - us, Ag - nus De -

A. 1

ne De - us, Ag - - nus De -

A. 2

ne De - us, Ag - nus De -

T. 1

us, Ag - nus De - i,

T. 2

us, Ag - nus De - i,

B. 1

us, Ag - nus De - i,

B. 2

us, Ag - nus De -

30

Tr. 1

i, Fi - li - us Pa - tris. (humming)
p

Tr. 2

i, Fi - li - us Pa - tris. Qui tol - lis pec -
p

A. 1

i, Fi - li - us Pa - tris. (humming)
p

A. 2

- i, Fi - li - us Pa - tris. Qui tol - lis pec -
p

T. 1

Fi - li - us Pa - tris. (humming)
p

T. 2

Fi - li - us Pa - tris. Qui tol - lis pec -
p

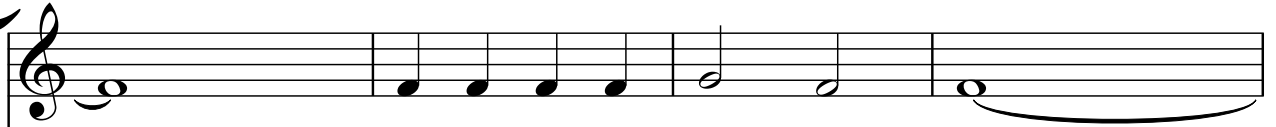
B. 1

Fi - li - us Pa - tris. (humming)
p

B. 2

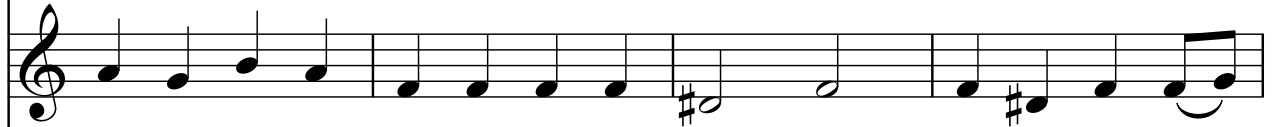
Fi - li - us Pa - tris. Qui tol - lis pec -
p

Tr. 1



mi - se - re - re no - bis. (humming)

Tr. 2



ca - ta mun - di, mi - se - re - re no - bis. Qui tol - lis pec -

A. 1



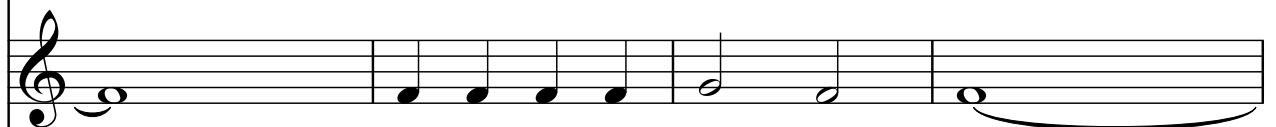
mi - se - re - re no - bis. (humming)

A. 2



ca - ta mun - di, mi - se - re - re no - bis. Qui tol - lis pec -

T. 1



mi - se - re - re no - bis. (humming)

T. 2



ca - ta mun - di, mi - se - re - re no - bis. Qui tol - lis pec -

B. 1



mi - se - re - re no - bis. (humming)

B. 2



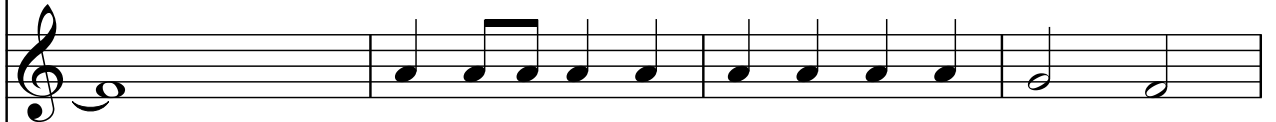
ca - ta mun - di, mi - se - re - re no - bis. Qui tol - lis pec -

Tr. 1 

su - sci-pe de - pre - ca - ti - o - nem no - stram.

Tr. 2 

ca - ta mun-di, su - sci-pe de - pre - ca - ti - o - nem no - stram.

A. 1 

su - sci-pe de - pre - ca - ti - o - nem no - stram.

A. 2 

ca - ta mun-di, su - sci-pe de - pre - ca - ti - o - nem no - stram.

T. 1 

su - sci-pe de - pre - ca - ti - o - nem no - stram.

T. 2 

ca - ta mun-di, su - sci-pe de - pre - ca - ti - o - nem no - stram.

B. 1 

su - sci-pe de - pre - ca - ti - o - nem no - stram.

B. 2 

i, ca - ta mun-di, su - sci-pe de - pre - ca - ti - o - nem no - stram.

Tr. 1
(humming) mi - se - re - re no - bis.

Tr. 2
Qui se - des ad dex - te - ram Pa - tris, mi - se - re - re no - bis.

A. 1
(humming) mi - se - re - re no - bis.

A. 2
Qui se - des ad dex - te - ram Pa - tris, mi - se - re - re no - bis.


T. 1
(humming) mi - se - re - re no - bis.

T. 2
Qui se - des ad dex - te - ram Pa - tris, mi - se - re - re no - bis.

B. 1
(humming) mi - se - re - re no - bis.

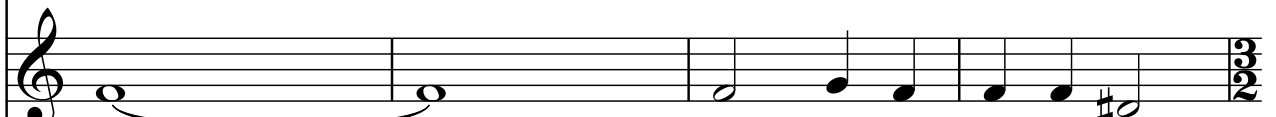
B. 2
Qui se - des ad dex - te - ram Pa - tris, mi - se - re - re no - bis.

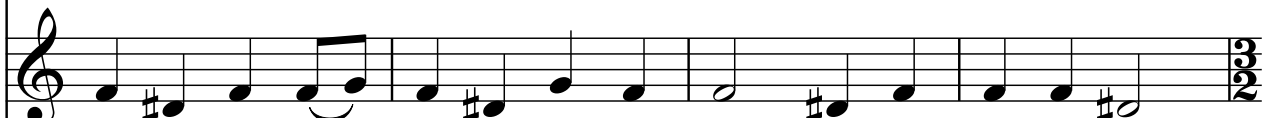
47

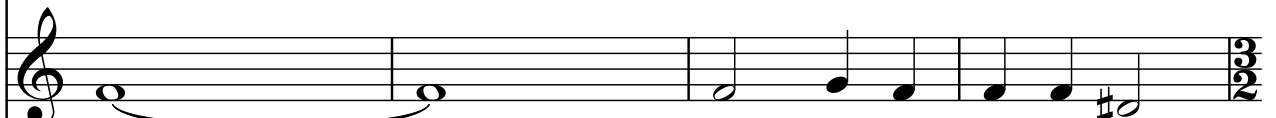
Tr. 1

 (humming) Tu so - lus Do - mi - nus.

Tr. 2

 Quo - ni - am tu so - lus sanc - tus. Tu so - lus Do - mi - nus.


A. 1

 (humming) Tu so - lus Do - mi - nus.

A. 2

 Quo - ni - am tu so - lus sanc - tus. Tu so - lus Do - mi - nus.

T. 1

 (humming) Tu so - lus Do - mi - nus.

T. 2

 Quo - ni - am tu so - lus sanc - tus. Tu so - lus Do - mi - nus.

B. 1

 (humming) Tu so - lus Do - mi - nus.

B. 2

 Quo - ni - am tu so - lus sanc - tus. Tu so - lus Do - mi - nus.

Tr. 1

(humming)

Tr. 2

Tu so - lus al ti - si - mus, Je - su - Chris - te.

A. 1

(humming)

A. 2

Tu so - lus al ti - si - mus, Je - su - Chris - te.

T. 1

(humming)

T. 2

Tu so - lus al ti - si - mus, Je - su - Chris - te.

B. 1

(humming)

B. 2

Tu so - lus al ti - si - mus, Je - su - Chris - te.


54

Tr. 1 

Cum sanc - to spi - ri - tu in glo - ria De - i
f

Tr. 2 


Cum sanc - to spi - ri - tu in glo - ria De - i
f

A. 1 

Cum sanc - to spi - ri - tu in glo - ria De - i
f

A. 2 

Cum sanc - to spi - ri - tu in glo - ria De - i
f

T. 1 

Cum sanc - to spi - ri - tu in glo - ria De - i
f

T. 2 

Cum sanc - to spi - ri - tu in glo - ria De - i
f

B. 1 

Cum sanc - to spi - ri - tu in glo - ria De - i
f

B. 2 

Cum sanc - to spi - ri - tu in glo - ria De - i

Tr. 1
Pa - - tris. A - men. A - men.

Tr. 2
Pa - - tris. A - men. A - men.

A. 1
Pa - - tris. A - men. A - men.

A. 2
Pa - - tris. A - men. A - men.

T. 1
Pa - - tris. A - men. A - men.

T. 2
Pa - - tris. A - men. A - men.

B. 1
Pa - - tris. A - men. A - men.

B. 2
Pa - - tris. A - men. A - men.